



GOBLIN

Dynamometric Omega Shackles



CAPACITY
from 1t to 100t
(Different capacities on demand)

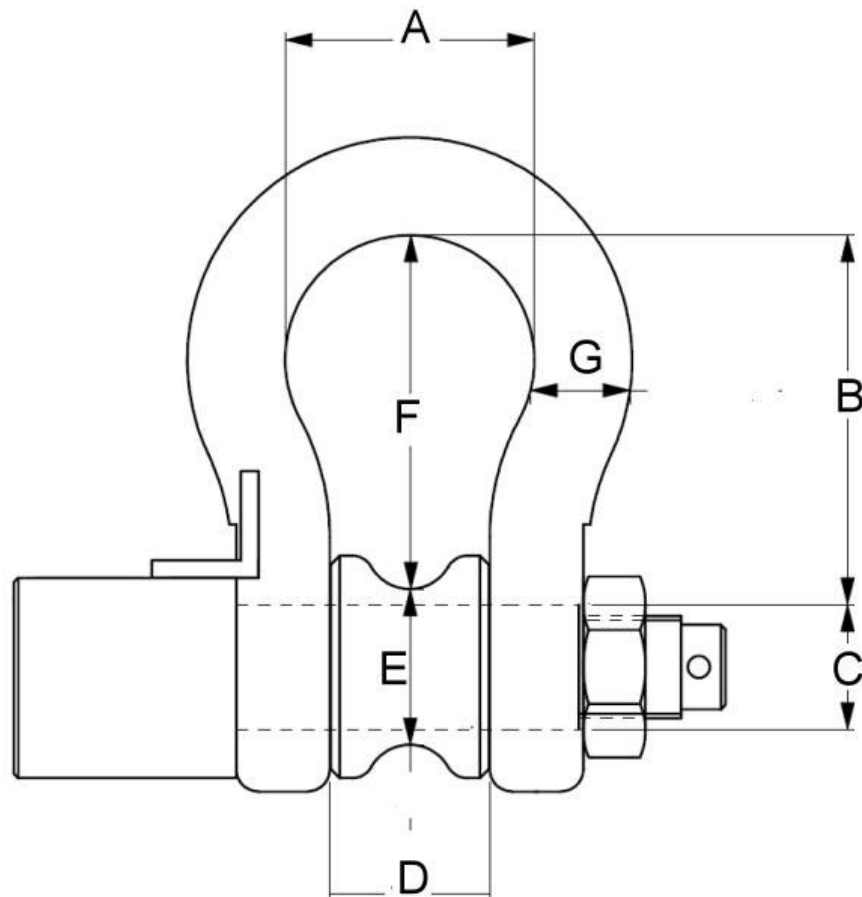
Shackles certificated **CE**
ATEX certification on demand
Protection **IP67**
Stainless steel load cell
High mechanical endurance
Easy to install
Can work with all our electronic devices
(certificated **CE**)

HOBGOBLIN

is the model with amplifier output signal (4-20 mA o 0-10 V)

TECHNICAL FEATURES

SAFE OVER LOAD	150 % F.S.
BREAKING OVERLOAD	300 % F.S.
SUPPLY VOLTAGE	15 Vcc MAX
OUTPUT	1 mV/V
OUTPUT TOLLERANCE	0,1 % F.S.
ZERO TOLLERANCE	1 % F.S.
LINEARITY	0,2 % F.S.
HYSTERESIS	0,2 % F.S.
REAPEATABILITY	0,2 % F.S.
INPUT RESISTANCE	350 – 360 Ohm
OUTPUT RESISTANCE	350 – 351 Ohm
INSULATION RESISTATION	MIN 2000 MOhm
CREEP	0,2 % F.S.
TEMPERATURE RANGE	-10 / +40 °C
MAX TEMPERATURE RANGE	-20 / +70 °C
TEMPERATURE EFFECT ZERO	0,003 % F.S. /°C
TEMPERATURE EFFECT OUTPUT	0,002 % F.S. /°C
ELECT. WIRE (STANDARD) 4x0,25	5 METERS
RED: INPUT +	BLACK: INPUT –
GREEN: OUTPUT +	WHITE: OUTPUT –



CAPACITY Ton.	A	B (± 5 mm)	C	D (± 2mm)	E	F (± 5 mm)	G	Weight Kg ~
1	51	76	M22	31	34	65	19	2,5
2,5	58	83	M24	36	36	79	22	3
6,5	92	133	M38	57	50	127	35	8
12	126	178	M50	74	65	171	43	15,5
25	180	254	M70	105	90	250	65	45
50	190	330	M80	127	110	315	75	65
75	238	381	M95	146	115	370	90	120
100	254	368	M108	146	132	355	104	210

Different capacities on demand

Note: The measures reported in the table are indicative and subject to changes by the manufacturer.